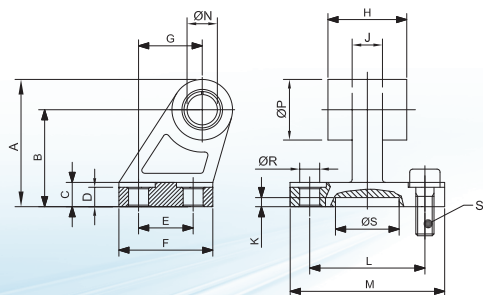


CMIP...E

SQUARE JOINT (AB7)

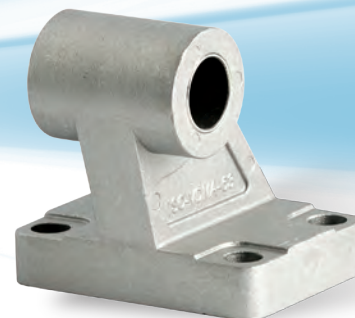


STANDARD VERSION:

MATERIAL OF THE BODY: DIE CASTED ALUMINIUM
MATERIAL OF THE BUSHES: STEEL AND PTFE

STAINLESS STEEL VERSION:

MATERIAL: STAINLESS STEEL AISI 304



CODE	CYLINDER Ø	A	B	C	D	E	F	G	H	J	K	L	M	ØN	ØP	ØR	ØS	S
CMIP32E	32	42	32	8	6.4	18	31	21	26	10	3	38	51	10	20	6.6	21	M6x20
CMIP40E	40	47	36	10	8.4	22	35	24	28	15	3	41	54	12	22	6.6	21	M6x20
CMIP50E	50	58	45	12	10.4	30	45	33	32	16	3	50	65	12	26	9	21	M8x20
CMIP63E	63	65	50	14	12.4	35	50	37	40	16	3	52	67	16	30	9	21	M8x20
CMIP80E	80	78	63	14	11.5	40	60	47	50	20	3	66	86	16	30	11	21	M10x25
CMIP100E	100	90	71	17	14.5	50	70	55	60	20	3	76	96	20	38	11	11	M10x25
CMIP125E	125	112.5	90	20	16.8	60	90	70	70	30	3	94	124	25	45	14	21	M12x25
CMIP160E*	160	146.5	115	25	21	88	126	97	90	36	5	118	156	30	63	14	31	M12x25
CMIP200E*	200	166.5	135	30	26	90	130	105	90	40	5	122	162	30	63	18	31	M16x30

* Version in stainless steel is not available – Note: supplied with 4 screws DIN 912