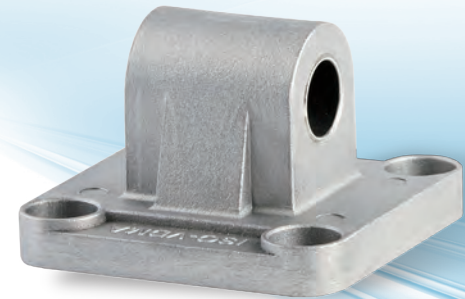
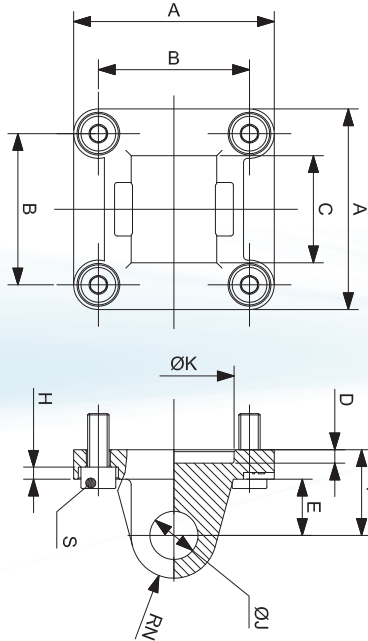


CMP...E

MALE HINGE (MP4)

STANDARD VERSION:
 MATERIAL OF THE BODY:
 DIE CASTED ALUMINIUM
 MATERIAL OF BUSHES: STEEL AND PTFE

STAINLESS STEEL VERSION:
 MATERIAL: STAINLESS STEEL AISI 304



CODE	CYLINDER Ø	A	B	C	D	E	F	H	ØJ	ØK	RN	S
CMP32E	32	45	32.5	26	5	13	22	3.5	10	30	10	M6x20
CMP40E	40	52	38	28	5	16	25	3.5	12	35	12	M6x20
CMP50E	50	65	46.5	32	5	16	27	4.5	12	40	12	M8x20
CMP63E	63	75	56.5	40	5	21	32	4.5	16	45	16	M8x20
CMP80E	80	95	72	50	5	22	36	4	16	45	16	M10x25
CMP100E	100	115	89	60	5	27	41	4	20	55	20	M10x25
CMP125E	125	140	110	70	7	30	50	10	25	60	25	M12x25
CMP160E	160	180	140	90	7	35	55	10	30	65	25	M16x30
CMP200E	200	220	175	90	7	35	60	14	30	75	25	M16x30

Note: supplied with 4 screws DIN 912