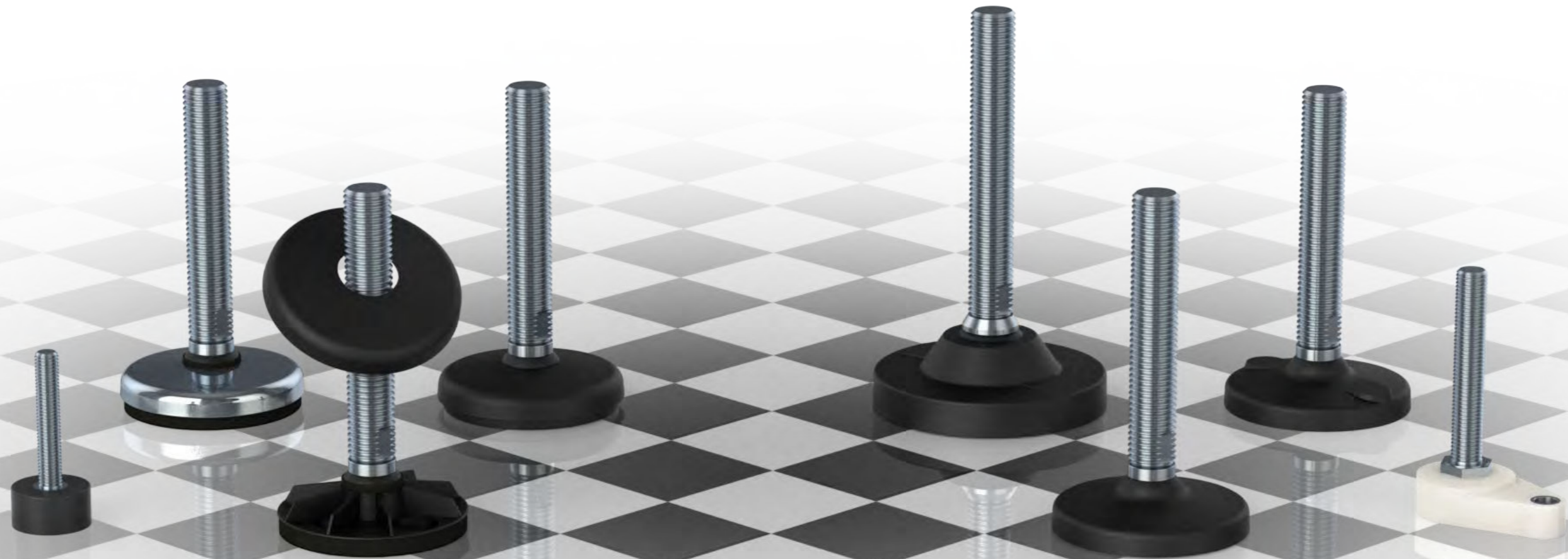


PLASTIC FULLY-THREADED LEVELLING FEET

THE OPTIMAL **PLASTIC FULLY-THREADED** CHOICE
FOR LOW- AND MIDDLE WEIGHT MACHINERY AND EQUIPMENT
IN **DIVERSE PRODUCTION** ENVIRONMENTS

THEY OFFER **VALUE-FOR-MONEY**
AND ARE AVAILABLE IN **NUMEROUS VARIETIES** AND **FUNCTIONS**



PRODUCT GROUP

PLASTIC FULLY-THREADED

The product group of plastic fully-threaded levelling feet is the optimal choice for low- and middle weight machinery and equipment in diverse production environments. Because of the wide variety and functionality these fully-threaded levelling feet offer great value-for-money and for the majority of the models a hygienic-oriented design because of the self-draining surfaces.

The reliability of the plastic fully-threaded levelling feet has been appreciated by customers world-wide for more than 25 years and the current product portfolio is a result of a continuous innovative approach and market feedback.

Product Group Features

- Wide variety in footplate design and functionality
- Unlimited customized height variations
- Optional fastening to the floor with sealed fixing holes
- Several different variations (weight load, height-adjustment, flexible mounting parts)
- Fully-threaded plastic levelling feet with self-draining surfaces and limited cleaning effort
- Optional anti-vibration and anti-slip rubber
- Spindle in stainless steel AISI 304/A2, 1.4301. Optional AISI 316/A4, 1.4401
- Footplate in reinforced polyamide
- Bolts, nuts, washers, welding plates and plastic bushings can be supplied



HP

Special Features

- Weight load up to 22.000 N
- Admits up to 10° slope on floors and equipment
- Hygienic-oriented design due to self-draining surfaces
- Possible fastening to the floor under the watertight plastic cap

192



HPG AS

Special Features

- Weight load up to 22.000 N
- Admits up to 10° slope on floors and equipment
- Hygienic-oriented design due to self-draining surfaces
- Embedded anti-slip rubber under footplate
- Possible fastening to the floor under the watertight plastic cap

194



HPR AS

Special Features

- Weight load up to 22.000 N
- Admits up to 10° slope on floors and equipment
- Hygienic-oriented design due to self-draining surfaces
- Embedded anti-slip rubber under footplate
- Possible fastening to the floor under the watertight stainless steel cap

196



HPA SERIES

Special Features

- Weight load up to 45.000 N
- Admits up to 10° slope on floors and equipment
- Hygienic-oriented design due to self-draining surfaces
- Optional fastening to the floor under the watertight plastic cap
- Optional anti-slip rubber under footplate

198



B

Special Features

- Designed for small applications
- Weight load up to 900 N
- FDA approved vulcanized rubber footplate
- Footplate diameters minimum 20 mm – maximum 50 mm
- Thread diameters minimum M6 - maximum M12

204



S

Special Features

- Designed for small applications
- Weight load up to 6.000 N
- FDA approved vulcanized soft white rubber footplate
- Footplate diameters minimum 40 mm – maximum 80 mm
- Thread diameters minimum M12 - maximum M20
- Optional fastening to the floor

206

ACCESSORIES

PLASTIC FULLY-THREADED & RUBBER

NGI is able to deliver all necessary accessories, which ensures a quick and easy installation of the levelling foot. In addition to supplying standardized accessories we are also able to supply customized accessories.



NUTS & WASHERS

- Stainless steel AISI 304/A2, 1.4301
- Standard nuts (DIN 934)
- Standard counter nuts (DIN 439)
- Standard flat washers (DIN 125)
- Standard fender washers (DIN 9010)
- All dimensions available

264



WELDING PLATES

- Stainless steel AISI 304/A2, 1.4301
- Squared welding plates
- Round welding plates
- All dimensions available

268



PLASTIC BUSHINGS

- Squared plastic bushings
- Round plastic bushings
- Many dimensions available

270

INSTRUCTIONS



DECLARATION OF CONFORMITY

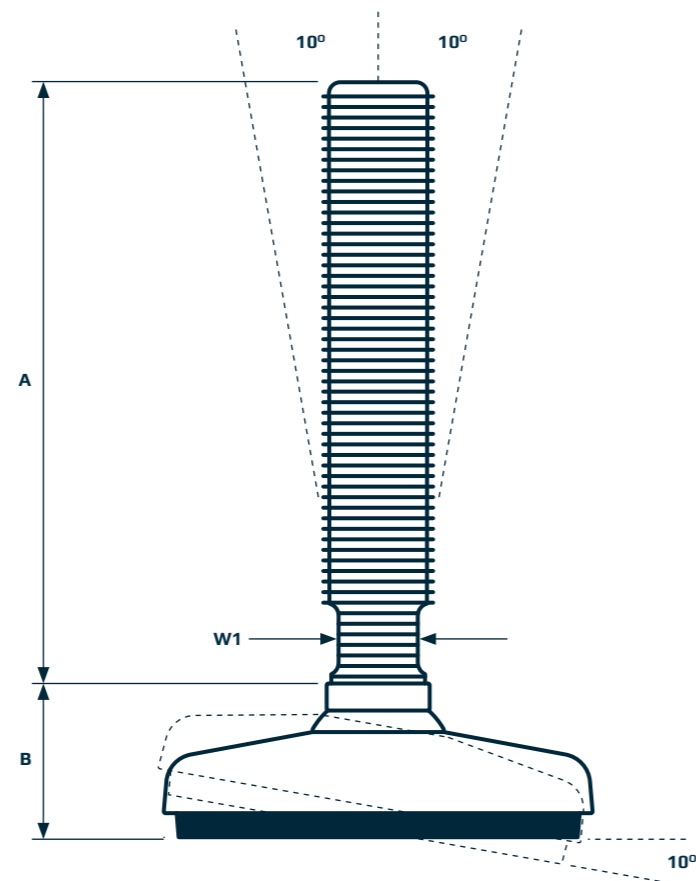
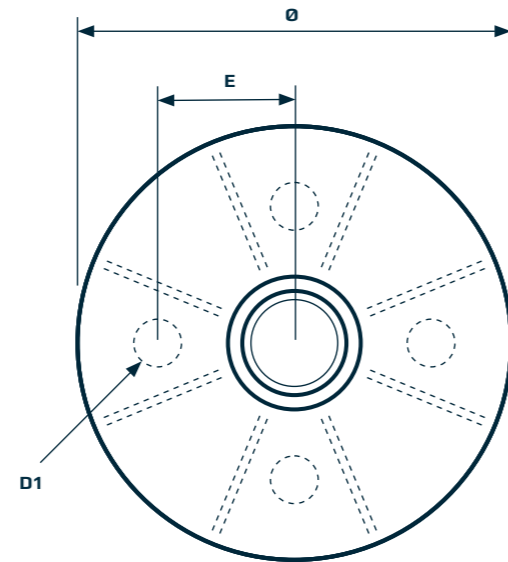
This declaration of conformity lists all the directives and standards that NGI adheres to. This ensures that products from NGI are always in compliance with currently valid requirements.



PLASTIC FULLY-THREADED HP

The HP plastic fully-threaded levelling foot is the optimal choice for low- and middle weight machinery and equipment in diverse production environments.

It is possible to fasten the levelling foot to the floor by the two pre-drilled fixing holes located under the watertight plastic cap lowering the cleaning effort. Bolts, nuts and washers can be supplied.



PLASTIC FULLY-THREADED LEVELLING FEET HP



FOOT PLATE



SPINDLE



PRODUCT CODE	FOOT - THREAD - SPINDLE TYPE
EXAMPLE	HP060 - 12 - 70

TYPE	DIAMETER Ø [mm]	HEIGHT B [mm]	HOLE POSITION E [mm]	HOLE DIAMETER D1 [mm]	NOM LOAD COMPRESSION [N]	ITEM CODE
80	80	31	27	9	15.000	HP080
100	100	37	32	11	20.000	HP100
120	120	37	40	11	22.000	HP120

TYPE ▶	70	100	150	180	230	310	W1 [mm]
THREAD	[N]	[N]	[N]	[N]	[N]	[N]	
M12	17.000	17.000	8.000	5.000	3.000	-	10
M16	32.000	32.000	29.000	20.000	12.500	7.500	13
M20	49.000	49.000	49.000	48.000	30.000	15.000	17
M24	70.000	70.000	70.000	70.000	65.000	35.000	19
* M30	112.500	112.500	112.500	112.500	112.500	95.000	24
HEIGHT A [mm]	73	98	140	173	223	305	



Total height = A + B
 Maximum nominal load = Lowest value for footplate or spindle
 Tolerance of height A = +/-1,5 mm

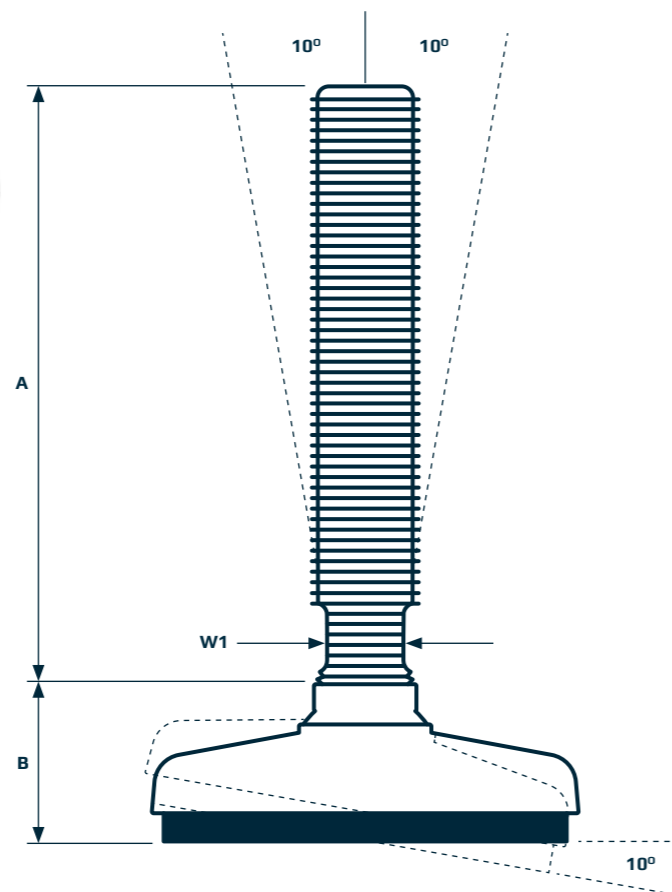
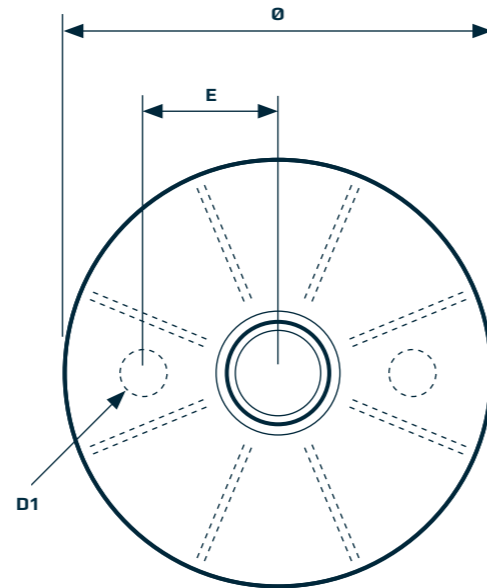
* Adjust A +7 mm and B -7 mm if footplate is combined with spindle M30 or M36

PLASTIC FULLY-THREADED HPG AS

The HPG AS plastic fully-threaded levelling foot is the optimal choice for low- and middle weight machinery and equipment in diverse production environments.

It is possible to fasten the levelling foot to the floor by the two pre-drilled fixing holes located under the watertight plastic cap lowering the cleaning effort. Bolts, nuts and washers can be supplied.

Additionally, the foot is equipped with embedded anti-slip rubber underneath the footplate.



PLASTIC FULLY-THREADED LEVELLING FEET HPG AS



FOOT PLATE



SPINDLE



PRODUCT CODE	FOOT - THREAD - SPINDLE TYPE
EXAMPLE	HPG060AS - 12 - 70

TYPE	DIAMETER Ø [mm]	HEIGHT B [mm]	HOLE POSITION E [mm]	HOLE DIAMETER D1 [mm]	NOM LOAD COMPRESSION [N]	ITEM CODE
60AS	60	33	--	--	15.000	HPG060AS
80AS	80	33	26,5	8,5	15.000	HPG080AS
100AS	100	37	31,5	11,0	20.000	HPG100AS
120AS	120	38	40,0	11,0	22.000	HPG120AS

TYPE ▶	70	100	150	180	230	310	W1 [mm]
THREAD	[N]	[N]	[N]	[N]	[N]	[N]	
M12	17.000	17.000	8.000	5.000	3.000	-	10
M16	32.000	32.000	29.000	20.000	12.500	7.500	13
M20	49.000	49.000	49.000	48.000	30.000	15.000	17
M24	70.000	70.000	70.000	70.000	65.000	35.000	19
* M30	112.500	112.500	112.500	112.500	112.500	95.000	24
HEIGHT A [mm]	73	98	140	173	223	305	

Total height = A + B
 Maximum nominal load = Lowest value for footplate or spindle
 Tolerance of height A = +/- 1,5 mm
 AS = Anti-Slip

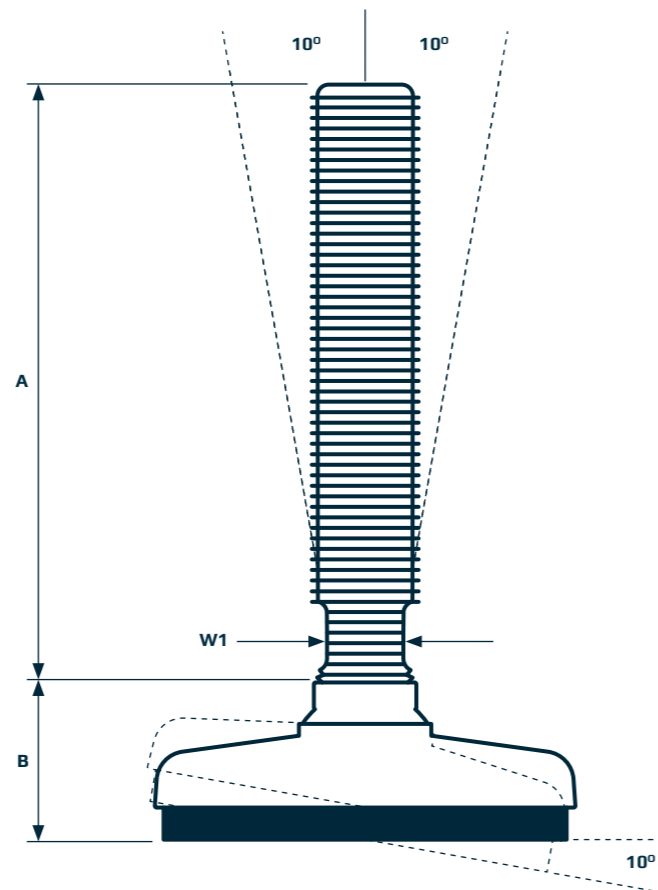
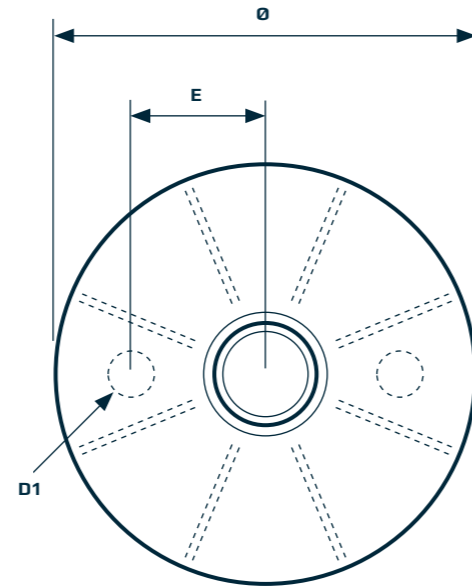
* Adjust A +7 mm and B -7 mm if footplate is combined with spindle M30 or M36

PLASTIC FULLY-THREADED HPR AS

The HPR AS plastic fully-threaded levelling foot is the optimal choice for low- and middle weight machinery and equipment in diverse production environments.

It is possible to fasten the levelling foot to the floor by the two pre-drilled fixing holes located under the watertight stainless steel cap lowering the cleaning effort. Bolts, nuts and washers can be supplied.

Additionally, the foot is equipped with embedded anti-slip rubber underneath the footplate.



FOOT PLATE



SPINDLE



PLASTIC FULLY-THREADED LEVELLING FEET HPR AS

PRODUCT CODE	FOOT - THREAD - SPINDLE TYPE
EXAMPLE	HPR080AS - 12 - 070

TYPE	DIAMETER Ø [mm]	HEIGHT B [mm]	HOLE POSITION E [mm]	HOLE DIAMETER D1 [mm]	NOM LOAD COMPRESSION [N]	ITEM CODE
80AS	80	33	26,5	8,5	15.000	HPR080AS
100AS	100	37	31,5	11,0	20.000	HPR100AS
120AS	120	38	40,0	11,0	22.000	HPR120AS

TYPE ▶	70	100	150	180	230	310	W1 [mm]
THREAD	[N]	[N]	[N]	[N]	[N]	[N]	
M12	17.000	17.000	8.000	5.000	3.000	-	10
M16	32.000	32.000	29.000	20.000	12.500	7.500	13
M20	49.000	49.000	49.000	48.000	30.000	15.000	17
M24	70.000	70.000	70.000	70.000	65.000	35.000	19
* M30	112.500	112.500	112.500	112.500	112.500	95.000	24
HEIGHT A [mm]	73	98	140	173	223	305	



Total height = A + B
 Maximum nominal load = Lowest value for footplate or spindle
 Tolerance of height A = +/-1,5 mm
 AS = Anti-Slip

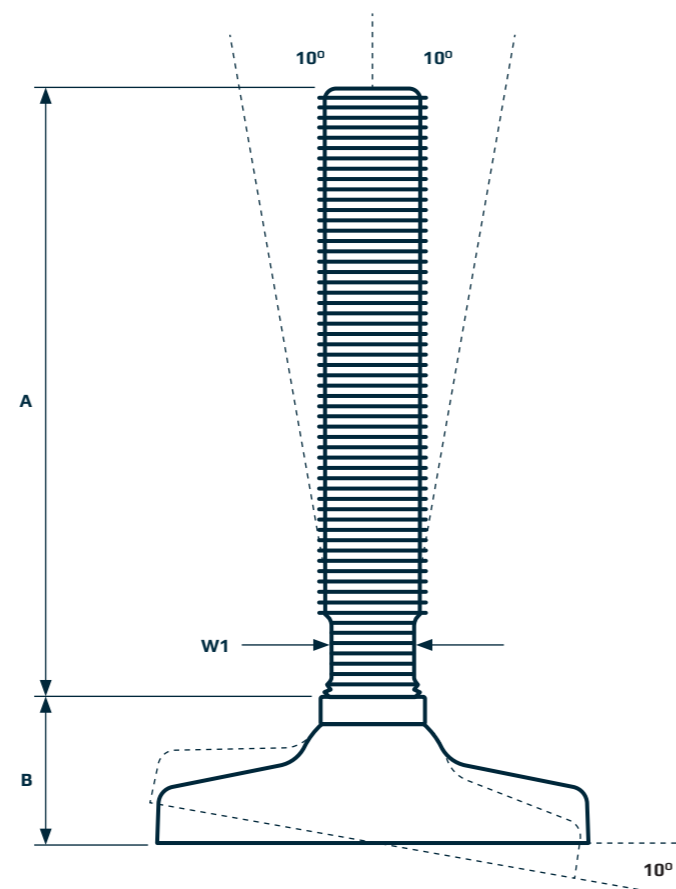
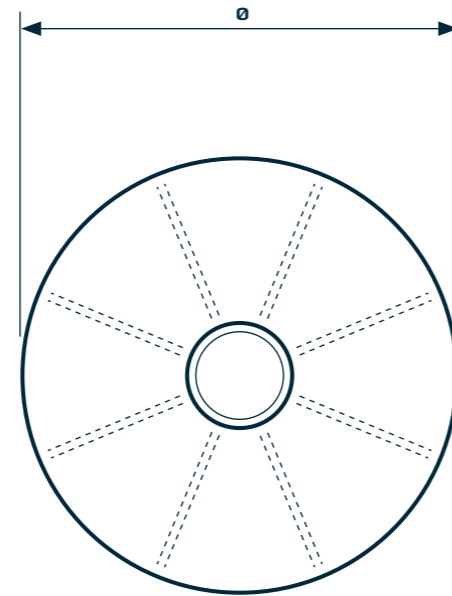
* Adjust A +7 mm and B -7 mm if footplate is combined with spindle M30 or M36

PLASTIC FULLY-THREADED HPA / HPA AS

The HPA and HPA AS plastic fully-threaded levelling foot is the optimal choice for low- and middle weight machinery and equipment in diverse production environments.

Lowered cleaning effort is obtained by the design of the self-draining surfaces.

Additionally, the HPA AS is equipped with embedded anti-slip rubber underneath the footplate.



FOOT PLATE



SPINDLE



PLASTIC FULLY-THREADED LEVELLING FEET HPA / HPA AS

PRODUCT CODE	FOOT - THREAD - SPINDLE TYPE
EXAMPLE	HPA040 - 10 - 070

TYPE	DIAMETER Ø [mm]	HEIGHT B [mm]	NOM LOAD COMPRESSION [N]	ITEM CODE
40	40	28	8.000	HPA040
40AS	40	28	8.000	HPA040AS
50	50	31	9.000	HPA050
50AS	50	31	9.000	HPA050AS
60	60	31	15.000	HPA060
60AS	60	33	15.000	HPA060AS
80	80	31	10.000	HPA080
80AS	80	31	10.000	HPA080AS
100	100	34	15.000	HPA100
100AS	100	34	15.000	HPA100AS

TYPE ▶	70	100	150	180	230	310	W1 [mm]
THREAD	[N]	[N]	[N]	[N]	[N]	[N]	
* M10	3.500	3.500	3.500	2.000	1.700	-	13
M12	17.000	17.000	8.000	5.000	3.000	-	10
M16	32.000	32.000	29.000	20.000	12.500	7.500	13
M20	49.000	49.000	49.000	48.000	30.000	15.000	17
M24	70.000	70.000	70.000	70.000	65.000	35.000	19
** M30	112.500	112.500	112.500	112.500	112.500	95.000	24
** M36	162.000	162.000	162.000	162.000	162.000	162.000	30
HEIGHT ▶ A [mm]	73	98	140	173	223	305	

Total height = A + B
 Maximum nominal load = Lowest value for footplate or spindle
 Tolerance of height A = +/- 1,5 mm
 AS = Anti-Slip

* M10 spindle only supplied for footplate HPA40AS and HPA50AS
 ** M30 spindle only supplied for footplate HPA80AS and HPA100AS
 ** Adjust A +7 mm and B -7 mm if footplate is combined with spindle M30 or M36

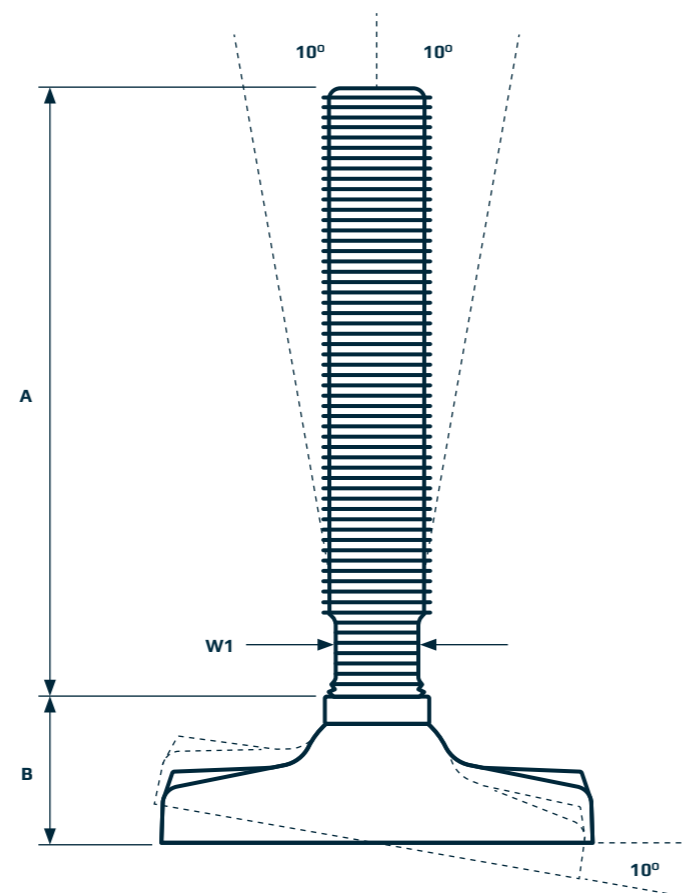
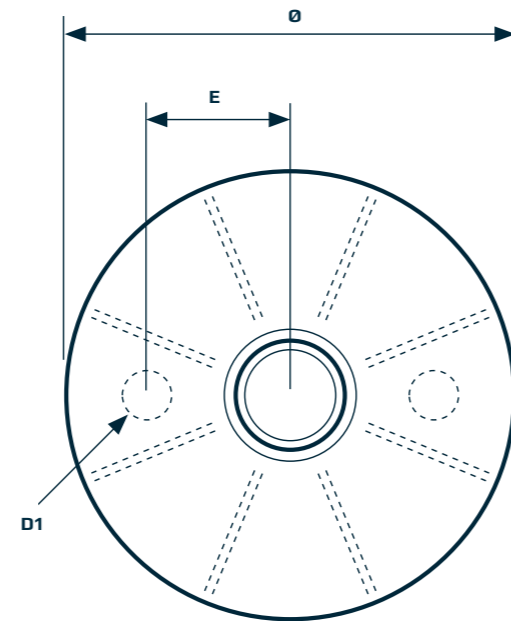
PLASTIC FULLY-THREADED HPA FIXING / HPA AS FIXING

The HPA Fixing and HPA AS Fixing plastic fully-threaded levelling foot is the optimal choice for low- and middle weight machinery and equipment in diverse production environments.

Lowered cleaning effort is obtained by the design of the self-draining surfaces.

It is possible to fasten the levelling foot to the floor by the two pre-pressed fixing holes, which are easily pressed out using a screwdriver. Bolts, nuts and washers can be supplied.

Additionally, the HPA AS Fixing is equipped with embedded anti-slip rubber underneath the footplate.



FOOT PLATE



SPINDLE



PLASTIC FULLY-THREADED LEVELLING FEET HPA FIXING / HPA AS FIXING

PRODUCT CODE	FOOT - THREAD - SPINDLE TYPE
EXAMPLE	HPA081 - 12 - 070

TYPE	DIAMETER Ø [mm]	HEIGHT B [mm]	HOLE POSITION E [mm]	HOLE DIAMETER D1 [mm]	NOM LOAD COMPRESSION [N]	ITEM CODE
81	80	31	28	10	10.000	HPA081
81AS	80	31	28	10	10.000	HPA081AS
101	100	34	37	12	15.000	HPA101
101AS	100	34	37	12	15.000	HPA101AS

TYPE ▶	70	100	150	180	230	310	W1 [mm]
THREAD	[N]	[N]	[N]	[N]	[N]	[N]	
M12	17.000	17.000	8.000	5.000	3.000	-	10
M16	32.000	32.000	29.000	20.000	12.500	7.500	13
M20	49.000	49.000	49.000	48.000	30.000	15.000	17
M24	70.000	70.000	70.000	70.000	65.000	35.000	19
* M30	112.500	112.500	112.500	112.500	112.500	95.000	24
* M36	162.000	162.000	162.000	162.000	162.000	162.000	30
HEIGHT ▶ A [mm]	73	98	140	173	223	305	



Total height = A + B
 Maximum nominal load = Lowest value for footplate or spindle
 Tolerance of height A = +/- 1,5 mm
 AS = Anti-Slip

* Adjust A +6 mm and B -6 mm if footplate is combined with spindle M30

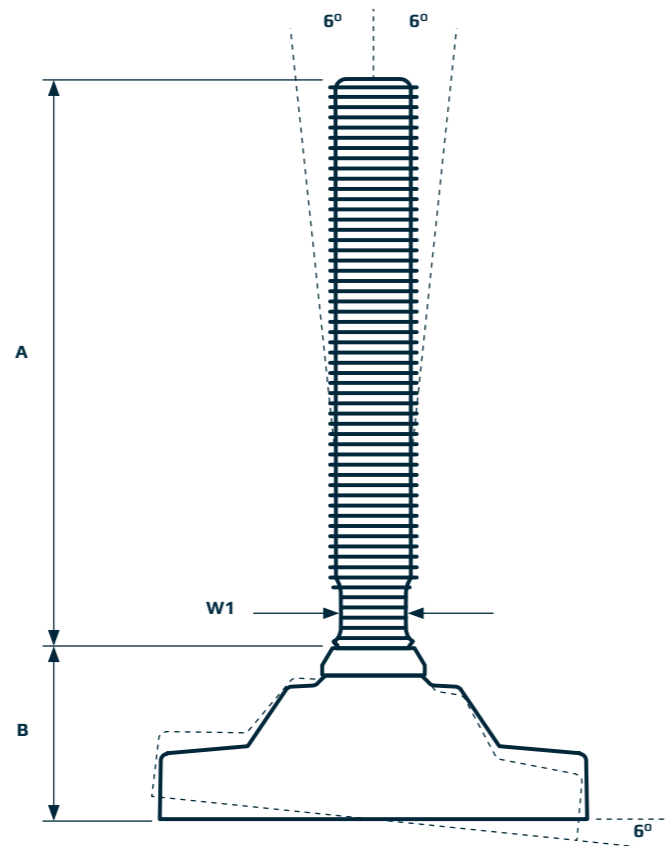
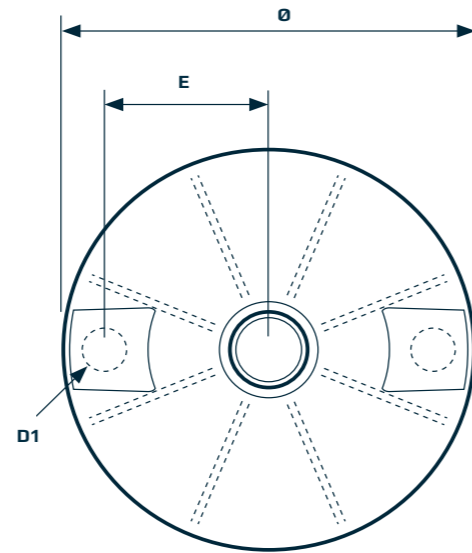
PLASTIC FULLY-THREADED HPA125 / HPA125 AS

The strong HPA125 and HPA125 AS plastic fully-threaded levelling foot is the optimal choice for heavier machinery and equipment in diverse production environments.

Lowered cleaning effort is obtained by the design of the self-draining surfaces.

It is possible to fasten the levelling foot to the floor by the two pre-pressed fixing holes, which are easily pressed out using a screwdriver. Bolts, nuts and washers can be supplied.

Additionally, the HPA125 AS is equipped with embedded anti-slip rubber underneath the footplate.



FOOT PLATE



SPINDLE



PLASTIC FULLY-THREADED LEVELLING FEET HPA125 / HPA125 AS

PRODUCT CODE	FOOT - THREAD - SPINDLE TYPE
EXAMPLE	HPA125 - 16 - 070

TYPE	DIAMETER Ø [mm]	HEIGHT B [mm]	HOLE POSITION E [mm]	HOLE DIAMETER D1 [mm]	NOM LOAD COMPRESSION [N]	ITEM CODE
125	125	50	28	10	45.000	HPA125
125AS	125	51	28	10	45.000	HPA125AS

TYPE ▶	100	150	180	230	310	W1 [mm]
THREAD	[N]	[N]	[N]	[N]	[N]	
M16	32.000	29.000	20.000	12.500	7.500	13
M20	49.000	49.000	48.000	30.000	15.000	17
M24	70.000	70.000	70.000	65.000	35.000	19
* M30	112.500	112.500	112.500	112.500	95.000	24
* M36	162.000	162.000	162.000	162.000	162.000	30
HEIGHT ▶ A [mm]	108	166	180	230	299	



Total height = A + B
 Maximum nominal load = Lowest value for footplate or spindle
 Tolerance of height A = +/-1,5 mm
 AS = Anti-Slip

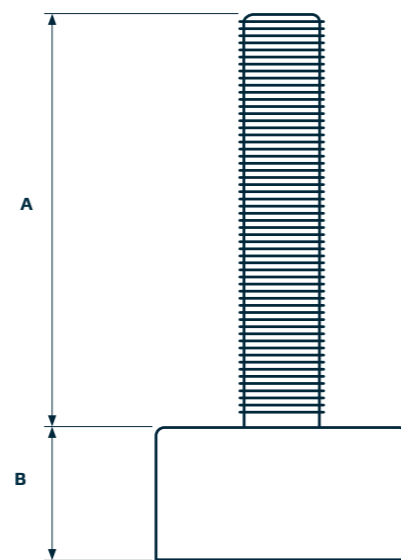
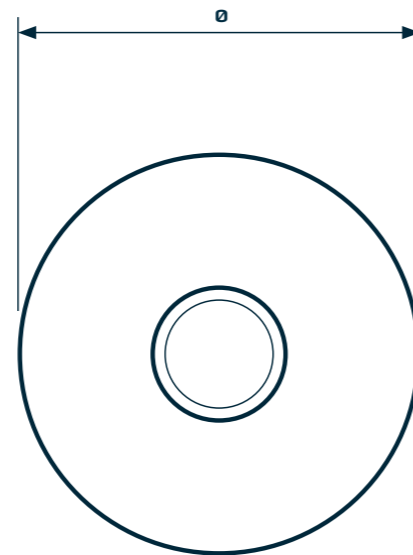
* Adjust A +6 mm and B -6 mm if footplate is combined with spindle M30 and M36

PLASTIC FULLY-THREADED

B

The B levelling foot is the optimal choice for very light equipment and small applications.

The levelling foot has a stainless steel bolt embedded into the black FDA-approved vulcanized 60 shore NBR rubber footplate.



PLASTIC FULLY-THREADED LEVELLING FEET

B



TYPE	DIAMETER Ø [mm]	FOOT HEIGHT B [mm]	SPINDLE HEIGHT A [mm]	THREAD	NOM LOAD COMPRESSION [N]	PRODUCT CODE
20	20	13	20	M6	100	B020-06-20
25	25	14	20	M8	150	B025-06-20
25	25	14	20	M6	150	B025-06-20
30	30	16	25	M10	250	B030-10-25
30	30	16	50	M10	250	B030-10-50
40	40	20	40	M12	650	B040-12-40
40	40	20	70	M12	650	B040-12-70
50	50	20	40	M12	900	B050-12-40

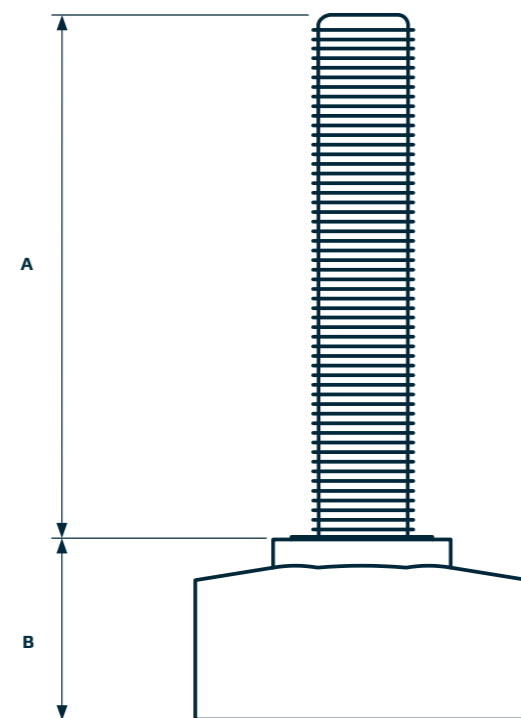
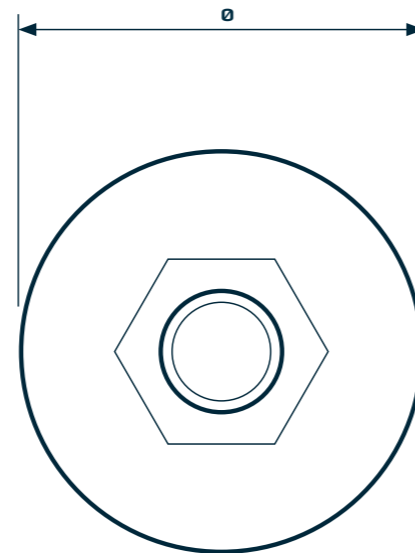


Total height = A + B
Tolerance of height A = +/- 1,5 mm

PLASTIC FULLY-THREADED S

The S levelling foot is the optimal choice for very light equipment and small applications.

The levelling foot has a stainless steel bolt embedded into the white FDA-approved vulcanized 72 shore rubber footplate.



PLASTIC FULLY-THREADED LEVELLING FEET S

S



TYPE	DIAMETER Ø [mm]	FOOT HEIGHT B [mm]	SPINDLE HEIGHT A [mm]	THREAD	NOM LOAD COMPRESSION [N]	PRODUCT CODE
40	40	23	100	M12	1.250	5040-12-100
50	50	28	100	M16	2.000	5050-16-100
65	65	35	100	M20	3.750	5065-20-100
80	80	44	100	M20	6.000	5080-20-100



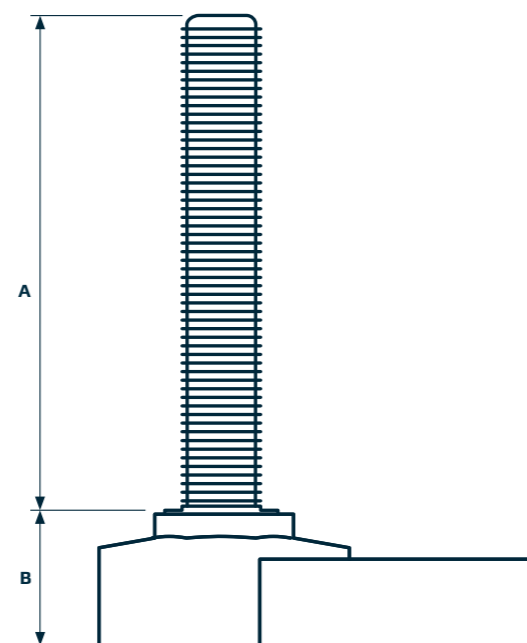
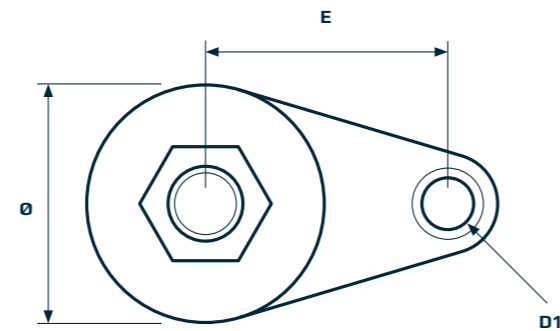
Total height = A + B
Tolerance of height A = +/-1,5 mm

PLASTIC FULLY-THREADED S51 FIXING

The S51 Fixing levelling foot is the optimal choice for very light equipment and small applications.

The levelling foot is designed to be fastened to the floor by the fixing hole in the footplate. Bolt, nut and washer can be supplied.

The levelling foot has a stainless steel bolt embedded into the white FDA-approved 72 shore vulcanized rubber footplate.



PLASTIC FULLY-THREADED LEVELLING FEET S51 FIXING

S51 FIXING



TYPE	DIAMETER Ø [mm]	HEIGHT B [mm]	HOLE POS E [mm]	HOLE D1 [mm]	HEIGHT A [mm]	THREAD	NOM LOAD COMPRESSION [N]	PRODUCT CODE
50	50	27	51	10,9	100	M16	2.000	5051-16-100



Total height = A + B
Tolerance of height A = +/-1,5 mm

DECLARATION OF CONFORMITY PLASTIC FULLY-THREADED LEVELLING FEET



NGI fundamentally adheres to all applicable directives and standards. All information is based on the current state of knowledge and is subject to change. We attentively follow the revisions and amendments to these directives and will design our products accordingly. This ensures that products from NGI are always in compliance with currently valid requirements.

Our product category is not covered by the scope of application of the EC directive for machinery. For this reason, they cannot be furnished with the CE marking in accordance with the EC directive for machinery.

Furthermore, we declare that the listed materials applied in our products comply with the demands for materials used within the food and pharmaceutical industries.

DECLARATION OF CONFORMITY PLASTIC FULLY-THREADED LEVELLING FEET

