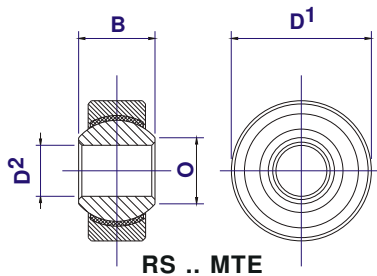


RODOBAL

SNODI SPHERICAL BEARINGS

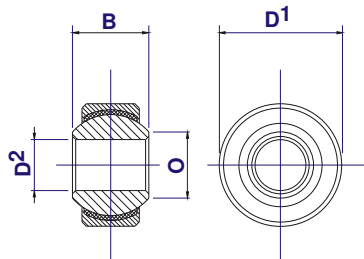
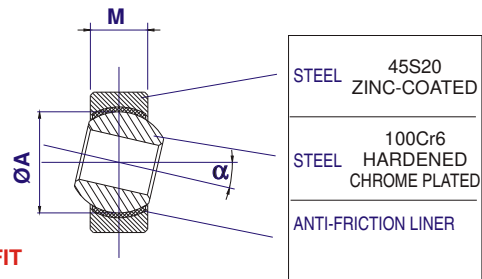
MOTORSPORT

SERIES RS..MTE
RG..MTE

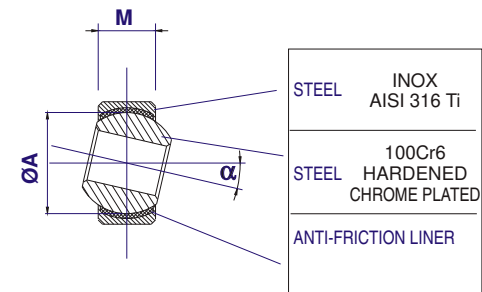


RS .. MTE

PRELOADED FIT



RG .. MTE



TYPE	D ²	D ¹	B	M	O	ØA	STATIC MAX. Co-daN RADIAL	BREAKAWAY TORQUE N/dm	α°	WEIGHT
RS 8 MTE	8	22	12	9	10,4	15,875	2780	1 - 10	14°	23 g
RS 10 MTE	10	26	14	10,5	12,9	19,050	3900	2 - 14	13°	38 g
RS 12 MTE	12	30	16	12	15,4	22,225	5300	6 - 18	13°	58 g
RS 14 MTE	14	34	19	13,5	16,8	25,400	6980	6 - 20	16°	83 g
RS 16 MTE	16	38	21	15	19,3	28,575	8780	8 - 22	15°	115 g
RS 18 MTE	18	42	23	16,5	21,8	31,750	10630	8 - 22	15°	150 g
RS 20 MTE	20	46	25	18	24,3	34,925	13020	8 - 25	14°	200 g
RG 8 MTE.19	8	19	12	9	10,4	15,875	2780	1 - 10	14°	17 g
RG 10 MTE.22	10	22	14	10,5	12,9	19,050	3900	2 - 14	13°	26 g
RG 12 MTE.26	12	26	16	12	15,4	22,225	5300	6 - 18	13°	41 g
RG 14 MTE.29	14	29	19	13,5	16,8	25,400	6980	6 - 20	16°	56 g
RG 16 MTE.31,5	16	31,5	21	15	19,3	28,575	8780	8 - 22	15°	70 g
RG 16 MTE.32	16	32	21	15	19,3	28,575	8780	8 - 22	15°	75 g
RG 18 MTE.33	18	33	20	16	20,4	28,575	9576	8 - 22	10°	80 g
RG 18 MTE.35	18	35	23	16,5	21,8	31,750	10630	8 - 22	15°	97 g
RG 20 MTE.40	20	40	25	18	24,3	34,925	13020	8 - 25	14°	142 g

LUBRICATION:

reinforced PTFE anti-friction liner,
maintenance free.

CLEARANCE:

Preloaded tight fit, no clearance.

MOUNTING:

data-sheet with tolerances and fits for
mounting available on request.